



MANUFACTURING<sup>®</sup>  
ENGINEERING  
RECYCLING

*- More Than Business -*







Energy, automotive, construction, electronics, aeronautics.... **All of these sectors are essential to our daily lives, but are increasingly threatened by the growing scarcity of metals.** Today's economic model has led to a frantic race for resources, often with little regard for the environment.

**At MTB, we've chosen a different path, one where circular economy principles, resource efficiency, and responsible innovation are not distant ideals, but, real actionable commitments.**

We've embraced this reality by pursuing two key missions:

- o Providing industry with high-quality secondary raw materials that carry a low environmental footprint.
- o Supporting manufacturers to be active participants in a more circular economy by providing ecodesigned products and proven, sustainable recycling solutions

We do this to ensure the prosperity of our ecosystem and by placing people, and more specifically our employees, at the heart of our project.

And that's precisely why we have over **235 employees who share the same purpose, because we want to build a sustainable model for our children mission.**

Since the company was taken over in 2011 by our current Chairman, Jean-Philippe Fusier, we have

realigned **our compass towards a long-term vision, collective action, and resilience.**

And despite the challenges, we remain steadfast in our commitment to:

- o Produce raw materials that meet the highest quality standards.
- o Make our recycling solutions the benchmark in the industry.
- o To benefit all those involved in the recycling industry by extending our reach worldwide.

**Our role in building a sustainable model doesn't stop there.** We need to develop further to continue delivering products and services that contribute to the decarbonization of today's economy.

**With this growth comes responsibility.** We are committed to minimizing our own environmental impact, protecting both the climate and biodiversity. At the same time, we strive to develop recycling systems and work environments that are resilient in the face of climate change.

Faced with this reality, we have one wish: that you join us in becoming a player in this fast-changing world - For Our Children!





Table of contents

MTB AT A GLANCE.....6

A history of innovation and strong values.....6

1 group, 3 expertises.....8

Our locations.....10

DESIGNING.....12

MANUFACTURING.....14

ENGINEERING.....16

RECYCLING.....20

OUR SERVICES.....25

Useful internal contacts:

- Need for recycling equipment:  
Romain Doeppen, Sales Manager  
r.doeppen@mtb.fr  
+33 6 31 29 18 01
- Recycling, treatment, recovery and waste management services:  
Simon Demurger, Product Manager  
s.demurger@mtb.fr  
+33 6 98 87 61 72
- Eco-innovation support / waste treatment diagnostics:  
Guilhem Grimaud, Eco-innovation Leader  
g.grimaud@mtb.fr  
+33 6 25 58 73 22
- Communication / CSR / Marketing Department:  
Elodie Blais, Marketing and Communications Manager  
e.blais@mtb.fr  
+33 6 68 79 29 20

Realisation: MTB Group Communication Department  
Photo credits: MTB / Adobe Stock



Simon and Mathias in front of a stock of cables  
MTB Recycling site in Trept, Isère (38) ©MTB



# MTB AT A GLANCE

## A history of innovation and strong values

Since its beginnings, MTB's history has been marked by a holistic and caring approach, guided by **decisions that align with evolving economic, legislative, social, and environmental landscapes.**



### 1981

#### MTB CREATION

Company founder Francis Sevilla **develops mechanical methods to recycle non-ferrous metals from cables.** True revolution compared to traditional methods such as burning. At the same time as manufacturing the first machines for sale, Francis Sevilla decided **to create recycling lines for aluminum and copper cables, in order to test and improve the equipment.** A positioning unique in the world.

### 2003

#### BUSINESS DIVERSIFICATION: RECYCLING OF WEEE

Ever since the European Directives on Waste Electrical and Electronic Equipment (WEEE) came into force, **MTB, in partnership with specialized companies, has been studying and developing innovative, simple and high-performance mechanical solutions for the cost-effective recovery of WEEE.** This research has enabled us to offer **a unique, effective and above all environmentally-friendly range of treatments for this type of waste.**



### 2011

#### A NEW START

**Jean-Philippe Fusier, Managing Director of MTB, buys the company and becomes Chairman.**

Influenced by his personal awareness of climate and social issues, every decision for MTB is now considered **according to its environmental and social impact.**

This is how our new President decided to **stop exporting our plastic waste to China,** after realizing that sorting this material was detrimental to the health of local employees.

From now on, MTB will keep its plastic waste and **develop its own mechanical sorting solution.**



### 2013 - 2015

#### DEVELOPMENT

We continue to diversify, acquiring **new skills in the fields of plastics, ASR (Automotive Shredder Residue) and bottom ash.** Notable achievements include the development of the SMB (Ballistic Magnetic Separator) and the CRX 2000 Rotary Shear.

We set up **our subsidiary USIMAX, a machining center** dedicated to the manufacture of our rotors, the key components of our shredders.

Finally, our international expansion with the creation of **MTB Recyclingtechnik GmbH in Germany marks a significant step forward.**



### 2016 - 2017

#### CREATION OF THE BOX RANGE

Recognizing that the treatment of complex industrial waste is still too marginal, we decided **to make recycling accessible and efficient, whatever the industrial profile.**

This is how **our BOX range of compact recycling systems came into being,** designed to integrate cutting-edge technologies into a limited number of containers.

Initially developed to handle cables, **our box range has since diversified to handle tires, CIW (Common industrial waste), WEEE, and more recently, battery production scrap.**



### 2023

#### ZERO WASTE BATTERY PILOT

Completed in 2023, **the ZWB line will demonstrates our ability to process used lithium-ion batteries and gigafactory production waste, with an active material recovery rate of over 95% on certain flows, ahead of the 2031 targets set by European battery regulations.**

It is a **strategic response to the environmental and economic challenges of future lithium-ion battery waste.**

### 2025

#### NEW ZERO WASTE COPPER LINE

We equip our teams with **a new copper cable recycling line that is both modern and versatile, incorporating all our latest innovations.**

This Zero Waste Copper project goes far beyond our company. It represents a **strategic response to the challenges of the metals market, reinforcing our contribution to the circular economy and resource recovery in France.**



### AND TOMORROW?

We will continue to develop new recycling standards.



# MTB AT A GLANCE

## 1 group, 3 expertises

### DESIGNING & MANUFACTURING



### ENGINEERING



### RECYCLING



### Key figures

**120 MILLIONS €**

turnover in 2024

**8% OF SALES**

invested in R&D in 2024

**50% OF SALES ARE INTERNATIONAL**

in 2024

**90% OF PURCHASES IN FRANCE**

↳ **50% LOCALLY**

**235 EMPLOYEES**

**50 000 TONNES**

of recycling capacity

**5 000 MACHINES SOLD**

since 1981

**10 KEY SECTORS**

for waste treatment

Cables, batteries, aluminum products, WEEE, motors, scrap metal, CIW, strands, tires/rubbers and complex wastes.

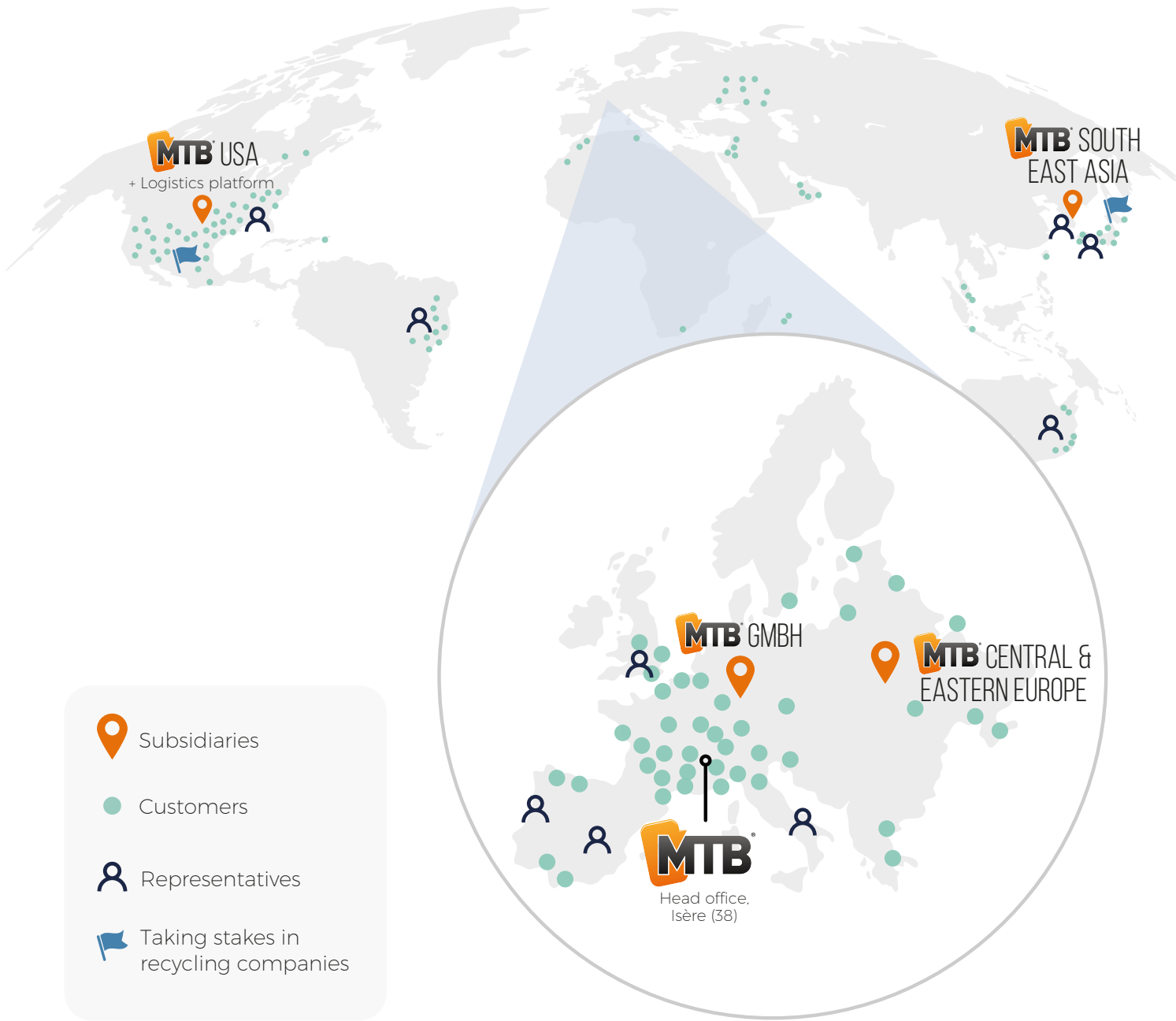


Scan and  
discover  
MTB in video



# MTB AT A GLANCE

## Our locations



### Some of our references





# DESIGNING Our recycling equipment

MTB Manufacturing.  
Saint-Chef, Isère (38) France

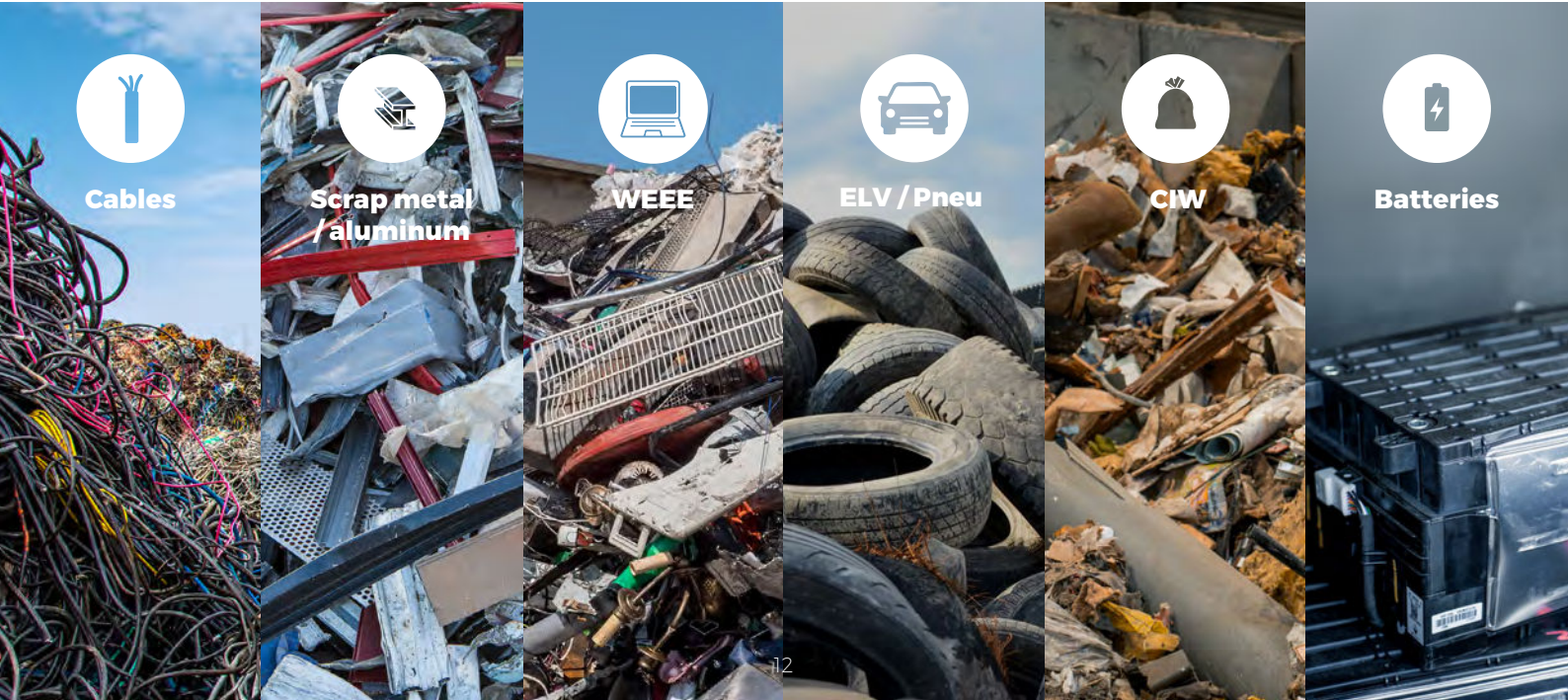


Stéphane, member of the mechanical design department at MTB Manufacturing's Saint-Chef site, Isère (38) ©MTB

## A team dedicated to innovation

**Internalized skills.** 50 experts: mechanical engineering, electrical engineering, draftsmen, project managers, sales staff.

**Over 44 years' experience.** We are constantly innovating to develop new treatment solutions for different types of waste:



## A range of over 30 modular and versatile machines:

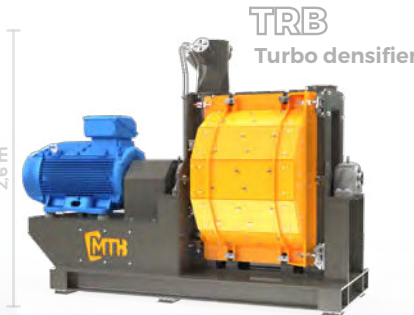
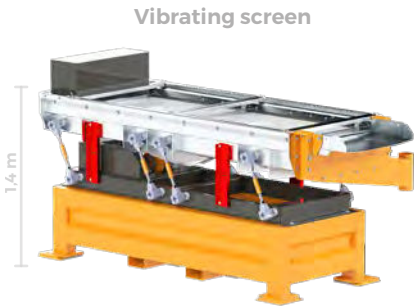
### Shredding and pre-shredding



### Granulation



### Separation



3D drawings - scale not respected

## Compact and mobile recycling lines



Ready to use, our BOX range integrates a **complete recycling line in assembled containers.**



Plug'n'Run





# MANUFACTURING

## Our recycling equipment

MTB Manufacturing.  
Saint-Chef, Isère (38) France

RELIABLE, ROBUST  
AND DURABLE MACHINES.

DESIGNED AND  
ASSEMBLED IN  
OUR ISÈRE FACILITY.

Box systems being assembled in the MTB Manufacturing workshop in Saint-Chef, Isère (38) ©MTB

8 000 m<sup>2</sup>

This is the surface area of our machine assembly workshop. Equipped with the latest infrastructure, we assemble machines weighing up to several dozen tons.

40 painters,  
assemblers and  
automation  
electricians

The number and diversity of people working in our workshop, dedicated to the assembly of MTB equipment.

USIMAX

## Precision machining for our XXL parts

All our rotors, the key components of our shredders, as well as wear parts such as blades and blade holders, are machined at our MTB La Manufacture site. This ensures a reliable, top-quality supply.

Machined parts up to:

6m  
long

1m  
diameter

10  
tons

The latest technology for high-precision machining:  
**Straight-bench design & thermal expansion control**



# ENGINEERING

## Turnkey recycling solutions

MTB Manufacturing.  
Saint-Chef, Isère (38) France

OPTING FOR A COMPLETE, TURNKEY MTB LINE  
MEANS YOU CAN RELY ON ...



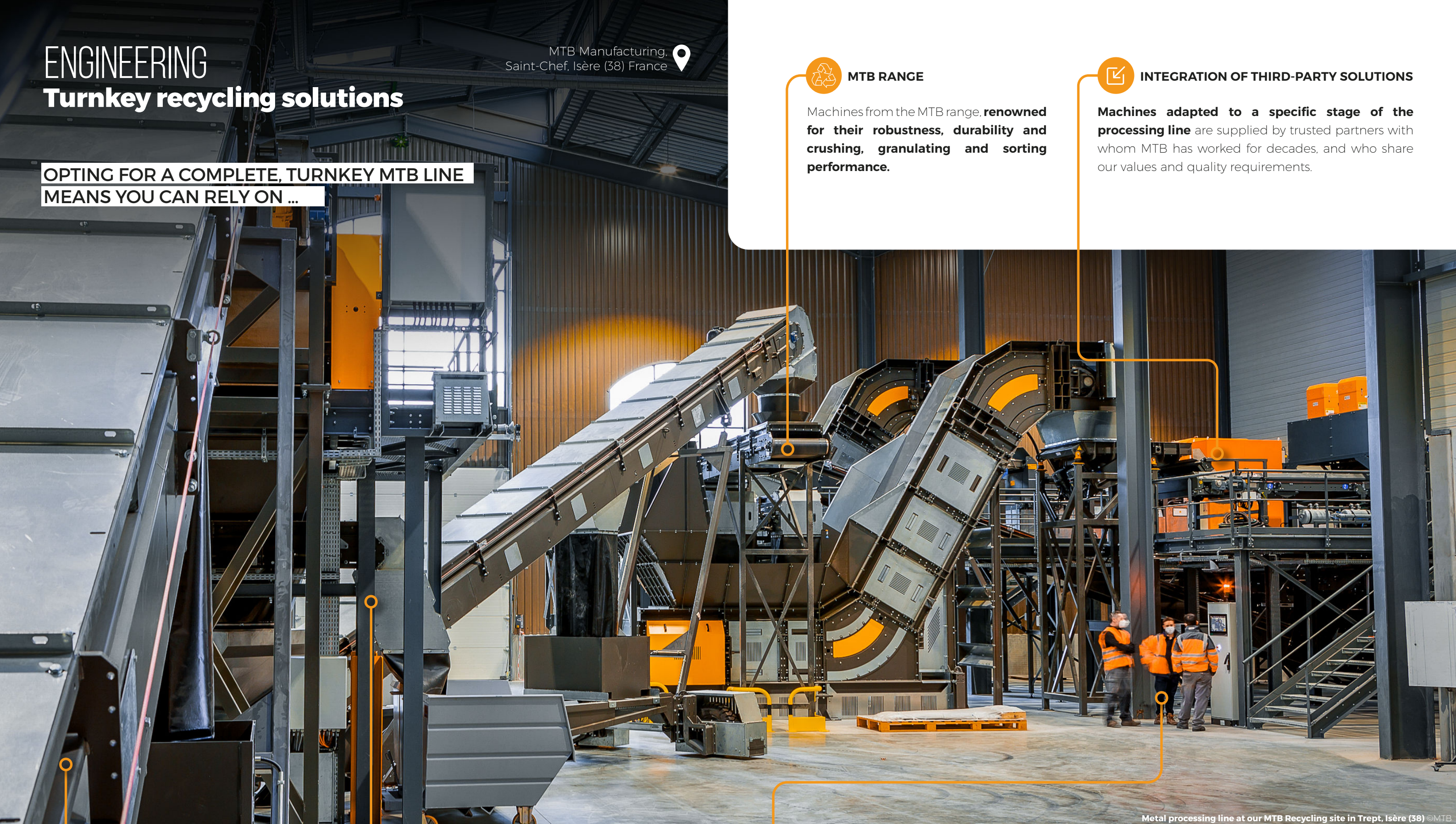
### MTB RANGE

Machines from the MTB range, renowned for their **robustness, durability and crushing, granulating and sorting performance.**



### INTEGRATION OF THIRD-PARTY SOLUTIONS

Machines adapted to a specific stage of the **processing line** are supplied by trusted partners with whom MTB has worked for decades, and who share our values and quality requirements.



Metal processing line at our MTB Recycling site in Trept, Isère (38) ©MTB



### HYPER-ADAPTABILITY

Whether it's a complex and unique line or a standard line, **we deploy all our human and material resources to offer a solution tailored to your needs.**



### PRODUCTION ERGONOMICS

**A customized, efficient and effective** layout designed to optimize product quality and **guarantee operator safety and comfort.**



### A SINGLE PROJECT MANAGER

Once the project is signed: **a project manager is assigned to the project.** He ensures the smooth flow of information and remains in **constant contact with internal teams, external service providers and the customer.** He is familiar with all the specifics and potential changes in the request. **He is responsible for the financial management of the entire project, from the design phase through to commissioning of the machines on site.**



Customer installations by MTB Manufacturing

CABLES LINE - USA



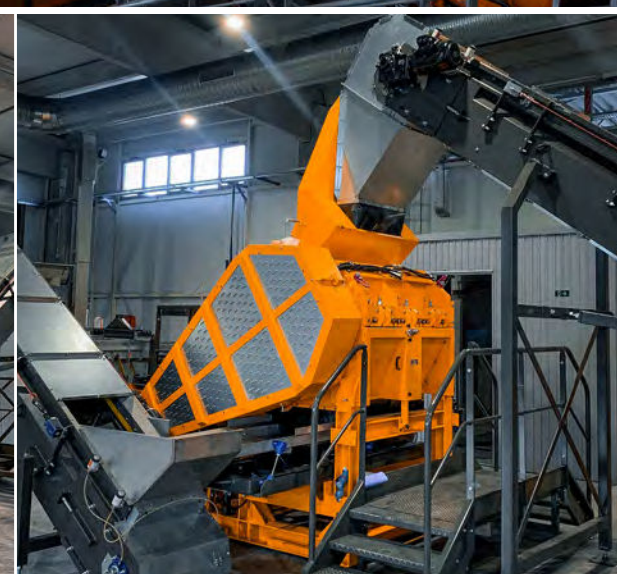
WEEE LINE - FRANCE



RDF LINE - FRANCE



TIRES LINE - SERBIA





# RECYCLING

## Complex waste

MTB Recycling.  
Trept, Isère (38) France

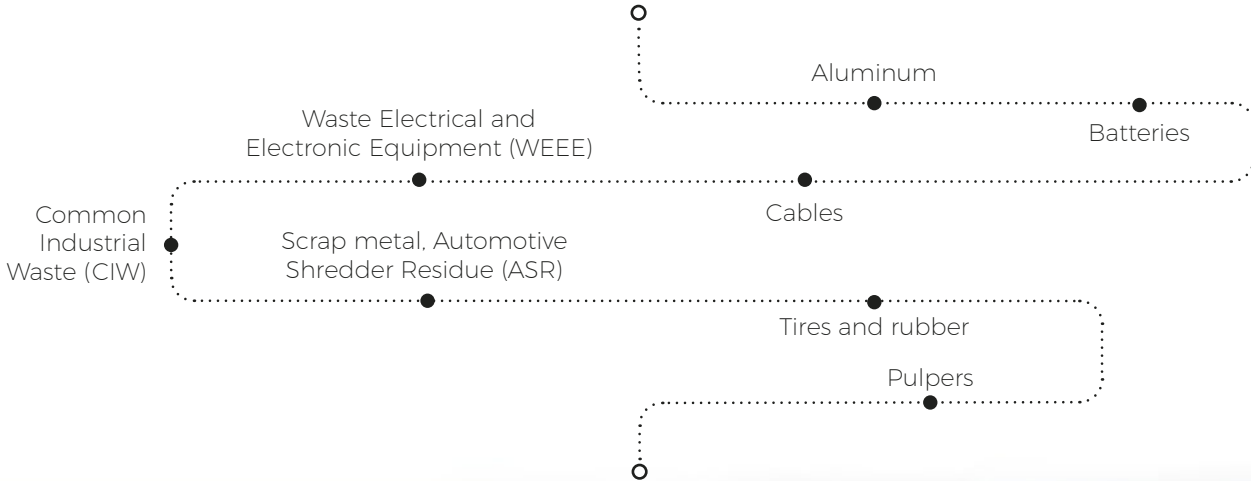
MTB Recycling is the first user of the waste treatment solutions developed by MTB Manufacturing.  
MTB Recycling has a **recycling capacity of 50,000 tons** of industrial waste per year, **on a surface area of 70,000 m²**.

- Over 44 years' experience in processing ferrous and non-ferrous metals.
- 95% recovery of incoming waste.

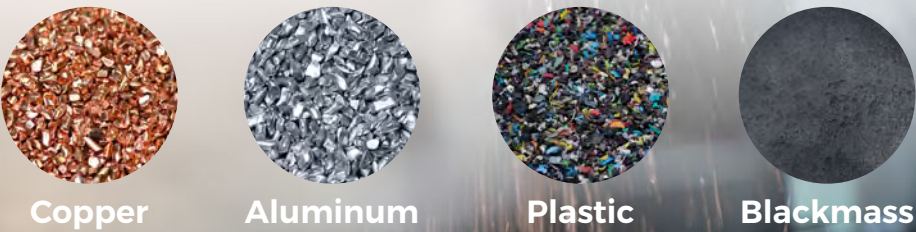


**7 recycling lines**, dedicated to tomorrow's waste treatment.

**A wide range of resources** for a single objective...



**Creating high-quality strategic materials** with low environmental impact.

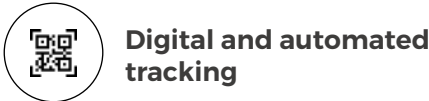
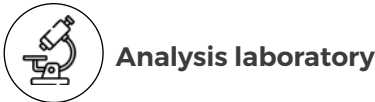


**COPPER AND ALUMINUM PURITY FROM**  
**99.9 % & 98.5 %**

Copper shot at the end of our ZWC line at MTB Recycling in Trept, Isère (38) ©MTB

### CERTIFIED TRACEABILITY AND PREMIUM QUALITY

Our traceability system provides total visibility of the product, from pick-up request to shipment of the final product.





Our production lines at MTB Recycling

# ZERO WASTE ALUMINUM

Aluminum cable recycling line

# ZERO WASTE COPPER

Copper cable recycling lines

# ZERO WASTE PLASTIC

Plastic recycling line

# ZERO WASTE BATTERY

Lithium-ion battery recycling pilot line



## OUR LATEST INNOVATION

# MAX

Minimum size  
for maximum efficiency.

The **MaX** is the smallest recycling line ever designed, combining robust design, proven separation and the unrivalled service and support for which MTB is renowned.



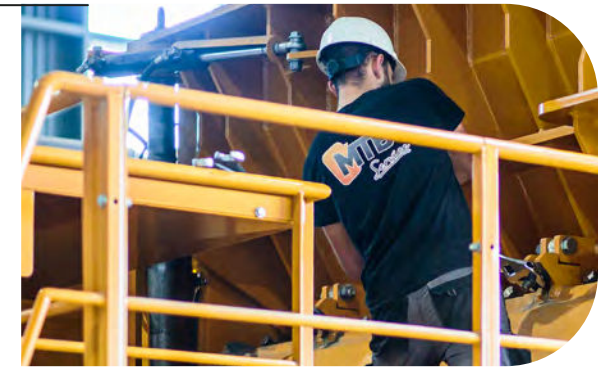
Scan and discover a series of videos about The MaX.

## OUR SERVICES

### Installation - MTB Service

Our team of technicians travel the world to commission your installations.

Specialized in maintenance and repair, and able to intervene rapidly, they support you in your day-to-day activities.



### Training and coaching

Our Training & Coaching team, made up of process experts, trains your staff after machine commissioning to give them the keys to success. The team ensures that your employees master all the parameters of our equipment, for optimized performance.



### Customer support

A dedicated team that:

- Organizes predictive maintenance for your equipment, based on line availability,
- Organizes breakdowns and supplies wear parts within a short timeframe,
- Provides advice.



### MYMTB

A platform for monitoring your MTB equipment.



Equipment  
inventory



Documents  
library



Access to data  
history



Support area



Notification  
center



Production  
overview





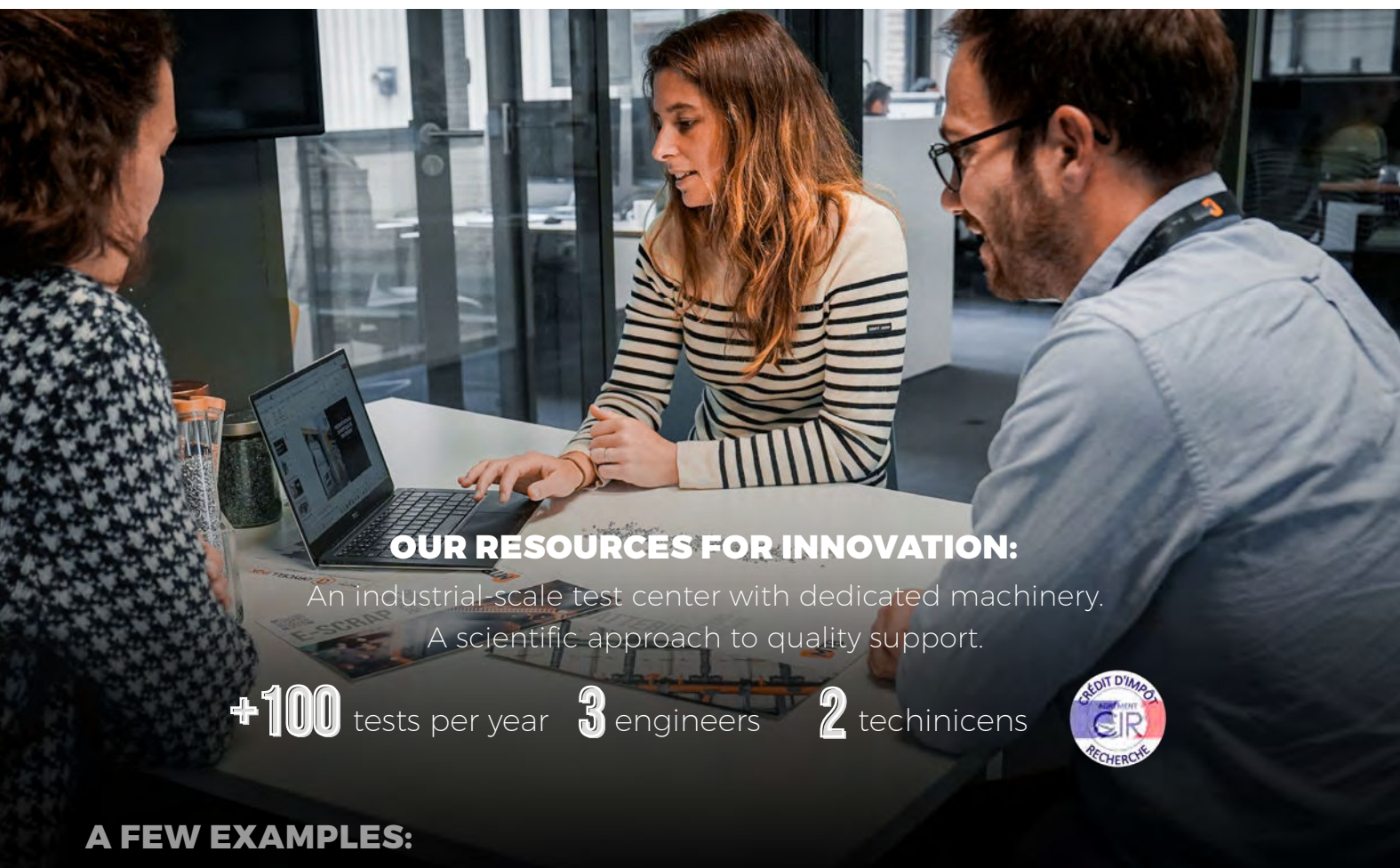
# OUR SERVICES

## Eco-innovation support

Our eco-innovation department helps manufacturers implement circular economy approaches by supporting them in the eco-design of their products. We collaborate closely to develop new solutions for reuse and recycling, aiming to create closed-loop systems that minimize waste.

In this way, we optimize the use of resources and reduce the environmental impact of goods and services.

MTB's offer covers recycling processes. **By optimizing resource use and reducing the environmental footprint of goods and services**, we help our partners achieve more sustainable outcomes.



### OUR RESOURCES FOR INNOVATION:

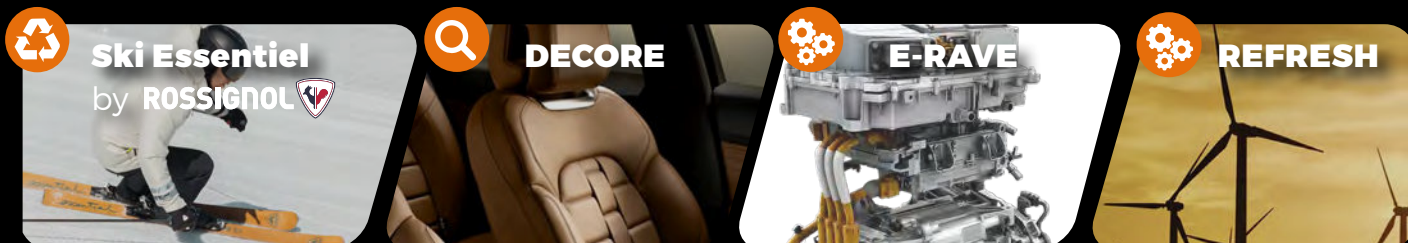
An industrial-scale test center with dedicated machinery.  
A scientific approach to quality support.

**+100** tests per year   **3** engineers   **2** technicians



### A FEW EXAMPLES:

Participation in consortiums and alliances with laboratories, universities and industry across the value chain, to help develop recycling channels for technical and technological waste.



**Ski Essentiel**  
by ROSSIGNOL

Implementation of a ski recycling process enabling materials to be reincorporated and improving the recyclability rate from 6% to 77%.

**DECORE**

Decarbonizing and recycling the automotive cockpit.

**E-RAVE**

Recycling critical metals found in vehicle electric motors.

**REFRESH**

Development of a solution for recycling composite materials from wind turbines.

## SUPPORT TOWARDS GREATER CIRCULARITY

IN 4 KEY STEPS



### Awareness

- Visit to the MTB recycling site to understand the stages involved in recycling a product.
- Training in recycling techniques.



### Investigation

- A complete study of the product:
- Shredding and sorting tests.
  - Research focused on maximizing the value of sorted materials
  - Evaluation of recycling performance.



### Development

- Connecting players in the value chain,
- Optimization or creation of a recycling chain,
- Manufacture machines adapted to the waste studied.



### Implementation

- Enhancing value of materials through partnerships
- Design For Recycling, life cycle analysis,
- Machine design adapted to waste.

## OUR FIELDS OF EXPERTISE:

TEXTILE  
INDUSTRY



SPORTS  
INDUSTRY



FASHION AND  
LUXURY INDUSTRY



RENEWABLE  
ENERGIES



ENERGY &  
ELECTRICAL NETWORKS



AUTOMOBILE  
INDUSTRY



ELECTRIC  
MOBILITY







# AND TOMORROW ?

Restored, energy-efficient sites with smart water management, where industry and nature coexist, supporting our three ambitions:



**Preserving our  
resources**

BY TARGETING ZERO WASTE



**Being an  
industrial model**

THAT CREATES WAOUH EFFECT



**Reconnecting  
with nature**

TO PRESERVE LIFE



[www.mtb.fr](http://www.mtb.fr)

3D projection in 2030 of the future MTB  
Recycling site at Trept, Isère (38) ©Vindry Archi



**Address:**

MTB Group  
Parc d'Activités des Balmes Dauphinoises  
3553 route de Chamont  
38890 Saint-Chef FRANCE

**Mail:**

[info@mtb.fr](mailto:info@mtb.fr)

**Phone:**

+ 33 4 74 92 87 68