

MAXI GRANULATOR



SRP 2400



SHREDDING



GRANULATION



AIR DENSITY



SIEVING TABLE



APPLICATION SPECIALTIES



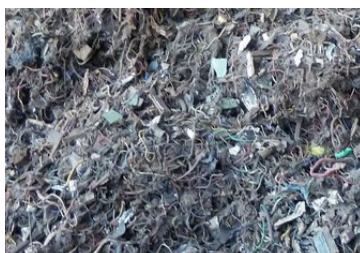
CABLES



ALUMINUM SCRAP



TIRES



ASR / SHREDDER WIRES



CU / AL RADIATORS



INDUSTRIAL WASTE



MADE IN FRANCE

VERSATILE EQUIPMENT / ROBUST AND RELIABLE / CLEAN AND UNIFORM CUT

- + The unique features of our SRP maxi granulators offer a high capacity homogeneous calibration of various materials at the lowest costs on the market.




FLYWHEEL

- 5 t disengageable flywheel
- 400 t of torque at blade tip
- Easy handling of sticking points thanks to the integrated torque supply



TORQUE LIMITER PROTECTION

- Friction disc

 POWER	420 HP / 315 Kw
 WEIGHT	35 T
 CUTTING SPEED	230 - 300 RPM

ROTOR

- Length : 2400 mm (94.4 INCH)
- Diameter : 600 mm (23.6 INCH)

BEST INERTIA EFFECT

- For greatest efficiency

RECTANGULAR BLADES | 38 X 78 X 195 MM

- Reversible 4 times
- Easily accessible blade gapping system
- Proprietary steel alloy

FIXED BLADES

24

MOBILE BLADES

60

EASY MAINTENANCE

- Easy screen replacement thanks to hydraulic assistance
- Easy access for maintenance
- User friendly

HYDRAULIC PUSHER

- Material build-up avoidance
- Optimized driving of the material towards the blades
- Increased throughput

OUR PREMIUM SERVICES

- Customized engineering
- Experience from being operator
- On-site installation and commissioning
- Training on both operation and maintenance
- Ultra-responsive customer service