

MTB

MANUFACTURING[®]
ENGINEERING
RECYCLING

- More Than Business -

Sophie

Another way of thinking
about industry

Franck

Alexandre



**Creator of strategic materials,
we build a sustainable model,
for our children.**

Table of contents

MTB AT A GLANCE	4
A history of innovation and strong values.....	4
1 group, 3 expertises.....	6
Our locations.....	8
DESIGNING	10
MANUFACTURING	14
ENGINEERING	16
RECYCLING	20
OUR SERVICES	24
THE BENEFITS OF THE EQUIPMENT USED ON SITE AND THE MTB RANGE ...	26

Useful internal contacts:

- Need for recycling equipment:
Romain Doeppen, Sales Engineer
r.doeppen@mtb.fr
+33 6 31 29 18 01
- Recycling, treatment, recovery and waste management services:
Simon Demurger, Commercial
s.demurger@mtb.fr
+33 6 98 87 61 72
- Communication and CSR Department:
Elodie Blais, Communication and CSR Manager
e.blais@mtb.fr
+33 6 68 79 29 20
- Networks and Innovation:
David Ravet, Director of Partnerships & Development
d.ravet@mtb.fr
+33 6 23 24 15 70

Realisation: MTB Group Communication Department

Photo credits: MTB / Adobe Stock

MTB AT A GLANCE

A history of innovation and strong values

Historical insights and convictions give meaning and strength to our projects and are in step with today's **economic, legislative, social, and environmental challenges.**



MTB Recycling, Trept, 1981 ©MTB

1981

MTB CREATION

Company founder Francis Sevilla **develops mechanical methods to recycle non-ferrous metals from cables.** True revolution compared to traditional methods such as burning. At the same time as manufacturing the first machines for sale, Francis Sevilla decided **to create recycling lines for aluminum and copper cables, in order to test and improve the equipment.**

A unique position in the world.

2003

BUSINESS DIVERSIFICATION: RECYCLING OF COMPLEX WASTE

Ever since the European Directives on Waste Electrical and Electronic Equipment (WEEE) came into force, **MTB, in partnership with specialized companies, has been studying and developing innovative, simple and high-performance mechanical solutions for the cost-effective recovery of WEEE.** This research has enabled us to offer **a unique, effective and above all environmentally-friendly range of treatments for this type of waste.**



MTB Recycling, Trept, 2015 ©MTB

2011

A NEW START

Jean-Philippe Fusier, Managing Director of MTB, buys the company and becomes Chairman.

Influenced by his personal awareness of climate and social issues, every decision for MTB is now considered **according to its environmental and social impact.**

This is how our new President decided to **stop exporting our plastic waste to China,** after realizing that sorting this material was detrimental to the health of local employees.

From now on, MTB will keep its plastic waste and **develop its own mechanical sorting solution.**

2013 - 2015

DEVELOPMENT

We continue to diversify, acquiring **new skills in the fields of plastics, ASR (Automotive Shredder Residue) and bottom ash.** Notable achievements include the development of the SMB (Ballistic Magnetic Separator) and the CRX 2000 Rotary Shear.

We set up **our subsidiary USIMAX, a machining center** dedicated to the manufacture of our rotors, the key components of our shredders.

Finally, our international expansion with the creation of **MTB Recyclingtechnik GmbH in Germany marks a significant step forward.**



MORI SEIKI NT 6600 Lathe
USIMAX Machining Center, Saint-Chef ©MTB



Zero Waste Battery Pilot Line
MTB Recycling, Trept, 2023 ©MTB

2016 - 2017

CREATION OF THE BOX RANGE

Recognizing that the treatment of complex industrial waste is still too marginal, we decided **to make recycling accessible and efficient, to as many industry players as possible.** This is how **our BOX range of compact recycling systems came into being,** designed to integrate cutting-edge technologies into a limited number of containers.

Initially developed to handle cables, **our box range has since diversified to handle tires, CIW (Common industrial waste), WEEE, and more recently, battery production scrap.**



CABLEBOX - Compact range, MTB Recycling, Trept, 2017 ©MTB

2023

ZERO WASTE BATTERY PILOT

Completed in 2023, **the ZWB line will demonstrate our ability to process used lithium-ion batteries and gigafactory production waste, with an active material recovery rate of over 95% on certain flows,** ahead of the 2031 targets set by European battery regulations.

It is a **strategic response to the environmental and economic challenges of future lithium-ion battery waste.**

2025

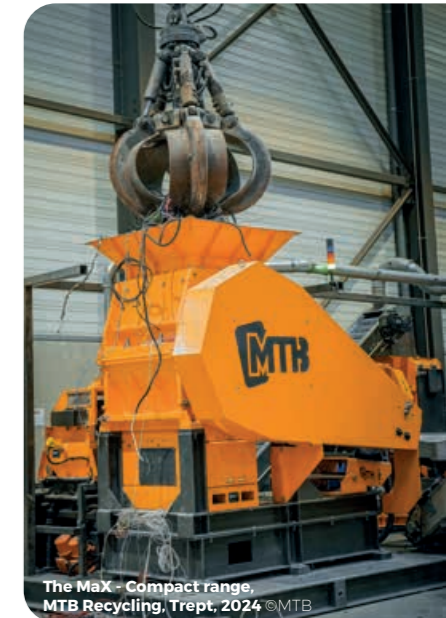
NEW ZERO WASTE COPPER LINE

We equip our teams with a **new copper cable recycling line that is both modern and versatile, incorporating all our latest innovations.**

This Zero Waste Copper project goes far beyond our company. It represents a **strategic response to the challenges of the metals market, reinforcing our contribution to the circular economy and resource recovery in France.**

AND TOMORROW?

We continue to develop new recycling standards as part of an approach that brings industry and nature into harmony



The MaX - Compact range,
MTB Recycling, Trept, 2024 ©MTB



Zero Waste Copper Line, MTB Recycling, Trept, 2025 ©MTB

MTB AT A GLANCE

1 group, 3 expertises

**DESIGNING
& MANUFACTURING**

ENGINEERING

RECYCLING

Key figures

125 MILLIONS €
turnover in 2025

5% OF SALES
invested in R&D in 2025

80% OF INTERNATIONAL SALES
in the equipment sector

90% OF PURCHASES IN FRANCE
↳ **50% LOCALLY**

235 EMPLOYEES

50 000 TONNES
of recycling capacity

5 500 MACHINES SOLD
since 1981

10 KEY SECTORS
for waste treatment
Cables, batteries, aluminum products, WEEE, motors, scrap metal, CIW, strands, tires/rubbers and complex wastes.



Scan and
discover
MTB in video

MTB AT A GLANCE

Our locations

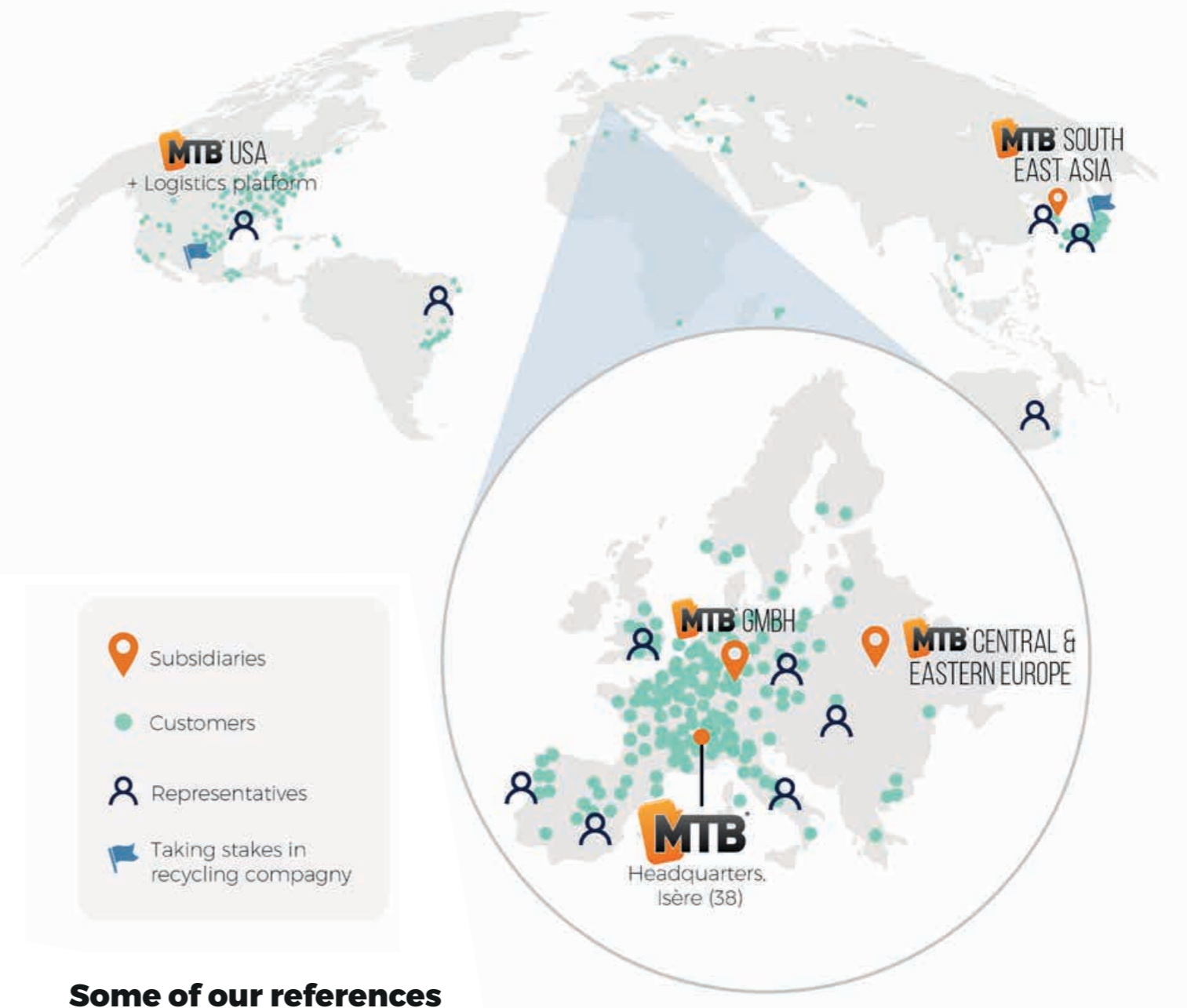
The ecosystem

Nearly 50 acres in Northern Isère (Saint-Chef & Trept) dedicated to supporting our current operations and future infrastructure, driving forward an ambitious industrial project for the next generation: "For Our Children."

Our presence in Isère is historical, but our influence is global.



Drone view of MTB Manufacturing, USIMAX and surrounding area in Saint-Chef, Isère (38) ©MTB

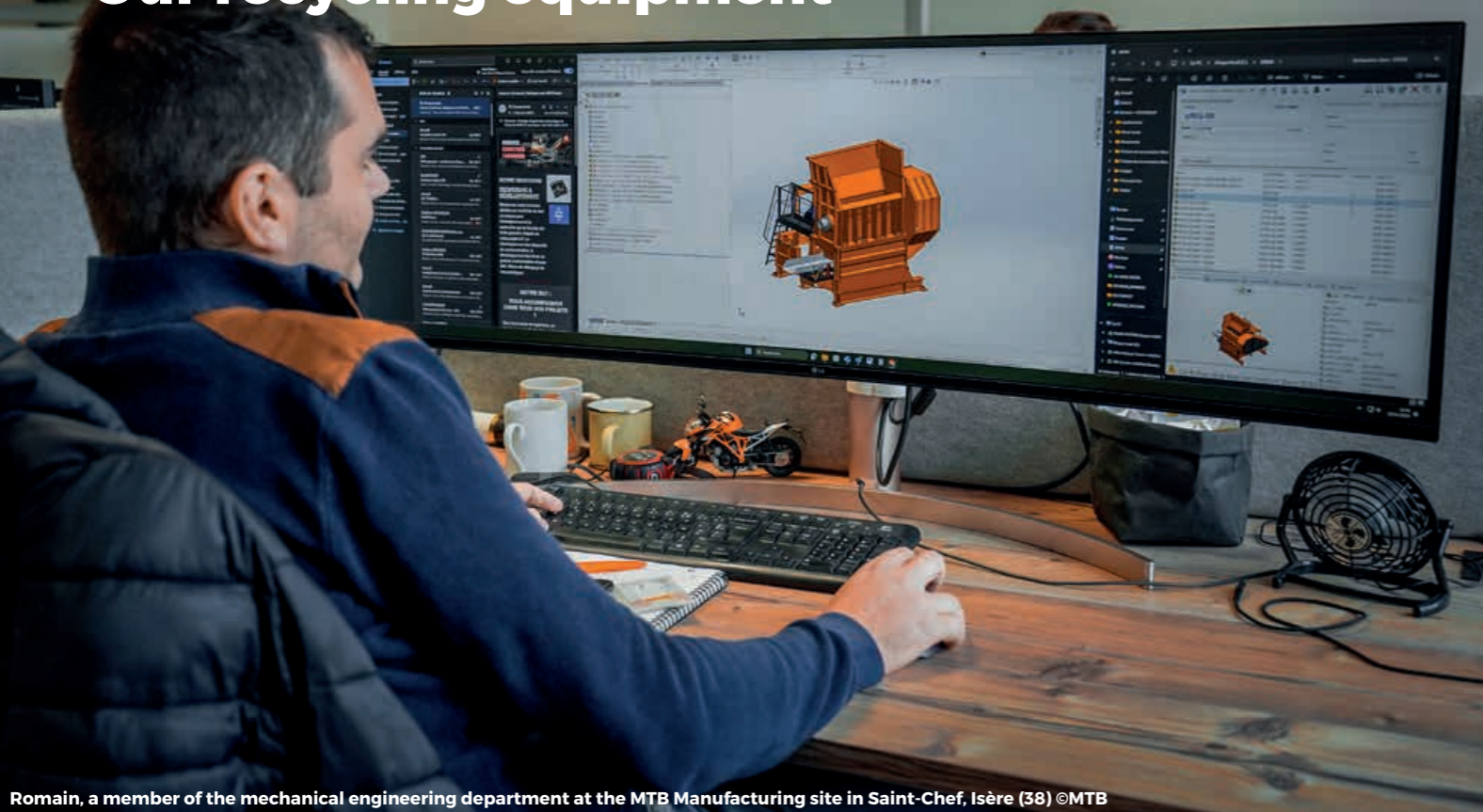


Some of our references



DESIGNING Our recycling equipment

MTB Manufacturing,
Saint-Chef, Isère (38) France



Romain, a member of the mechanical engineering department at the MTB Manufacturing site in Saint-Chef, Isère (38) ©MTB

A range of over 30 modular and versatile machines:

What makes MTB solutions so effective?

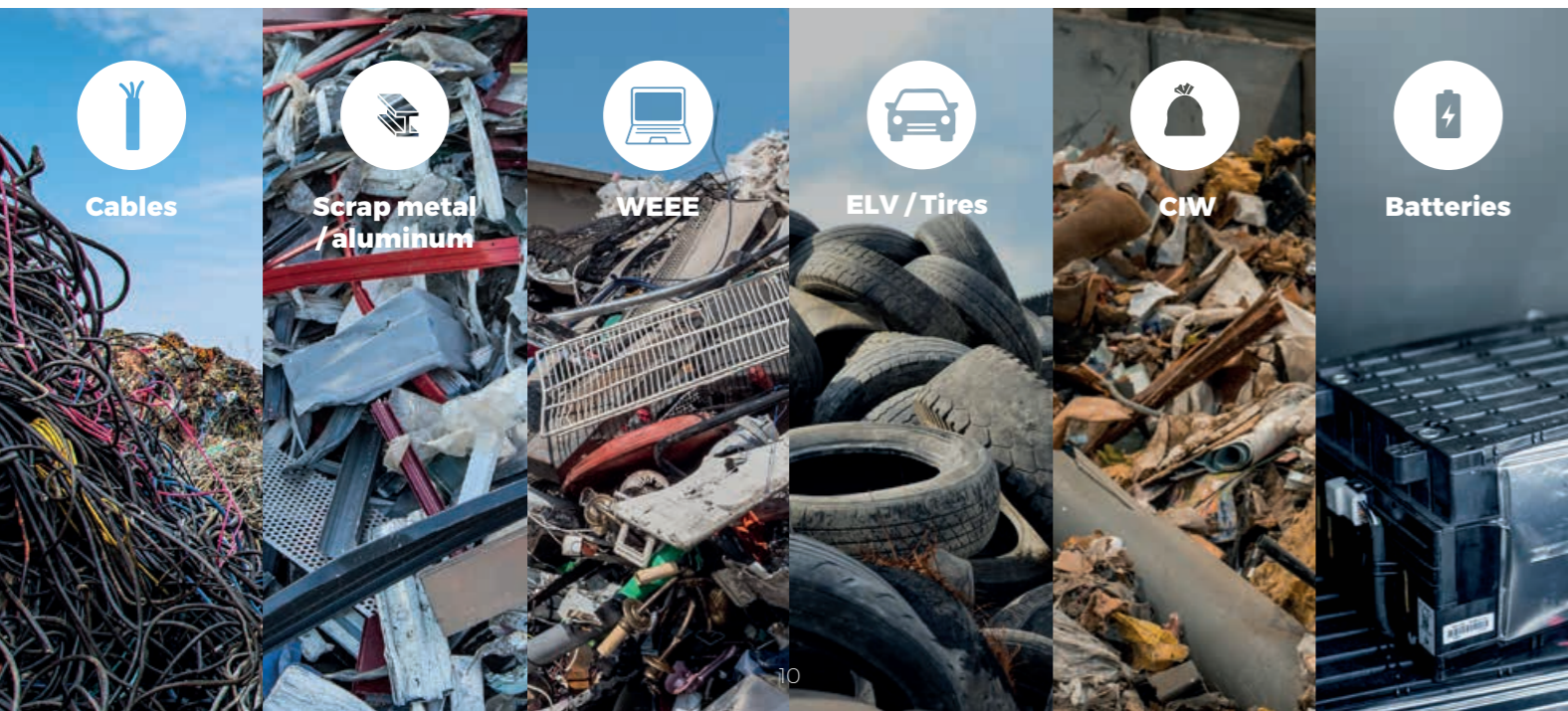
A rigorous preparation process comprising three distinct mechanical stages: shredding, granulation, and sorting. A controlled particle size distribution recognized by the market, ensuring optimal value.



A team dedicated to innovation

Internalized skills. 50 experts: mechanical and electrical engineering, draftsmen, project managers, sales staff.

Over 44 years' experience. We are constantly innovating to **develop new treatment solutions for different types of waste:**



Shredding and pre-shredding



Granulation



Separation



3D drawings - scale not respected

DESIGNING Our recycling equipment



CABLEBOX at the MTB Recycling site in Trept, Isère (38) ©MTB



Compact system installations
Fully assembled in our workshop, these compact systems are operational on every continent.

MaX - KOREA

A range of compact, turnkey systems:

Ready to use, our BOX range integrates a **complete recycling line in assembled containers.**

The compactness of these systems offers great flexibility, making it easy to move the equipment if necessary. This is one of the strengths of this range of recycling solutions.

Plug'n'Run



39'12"/12 m



40'/12,2 m

Up to 2 T/h
The **CABLEBOX ONE**

Up to 3 T/h
The **CABLEBOX**



80'05"/24,40 m



CABLEBOX ONE - BRAZIL



CABLEBOX - USA

MANUFACTURING

Our recycling equipment

MTB Manufacturing,
Saint-Chef, Isère (38) France

**RELIABLE, ROBUST
AND DURABLE MACHINES.**

**DESIGNED AND
ASSEMBLED IN
OUR ISÈRE FACILITY.**

Box systems being assembled in the MTB Manufacturing workshop in Saint-Chef, Isère (38) ©MTB

15 000 m²

Our machine assembly facility is equipped with the latest infrastructure, we assemble machines weighing up to several dozen tons.

40 mechanics, fitters, painters, and automation technicians

The number and diversity of people working in our workshop, dedicated to the assembly of MTB equipment.

USIMAX

A high-precision machining center for manufacturing the heart of our machines

All our rotors, the key components of our shredders, as well as wear parts such as blades and blade holders, are machined at our MTB La Manufacture site. This ensures a reliable, top-quality supply.

Machined parts up to:

6m long **1m** diameter **10** tons

- Equipment:
 - 2 MORI SEIKI NT6600 machining centers
 - 1 DMC 1150V milling machine
 - 1 coordinate measuring machine

- State-of-the-art technologies for high-precision machining:
 - Straight-bench design & thermal expansion control.**

ENGINEERING

Turnkey recycling solutions

MTB Manufacturing,
Saint-Chef, Isère (38) France

OPTING FOR A COMPLETE, TURNKEY MTB LINE
MEANS YOU CAN RELY ON ...



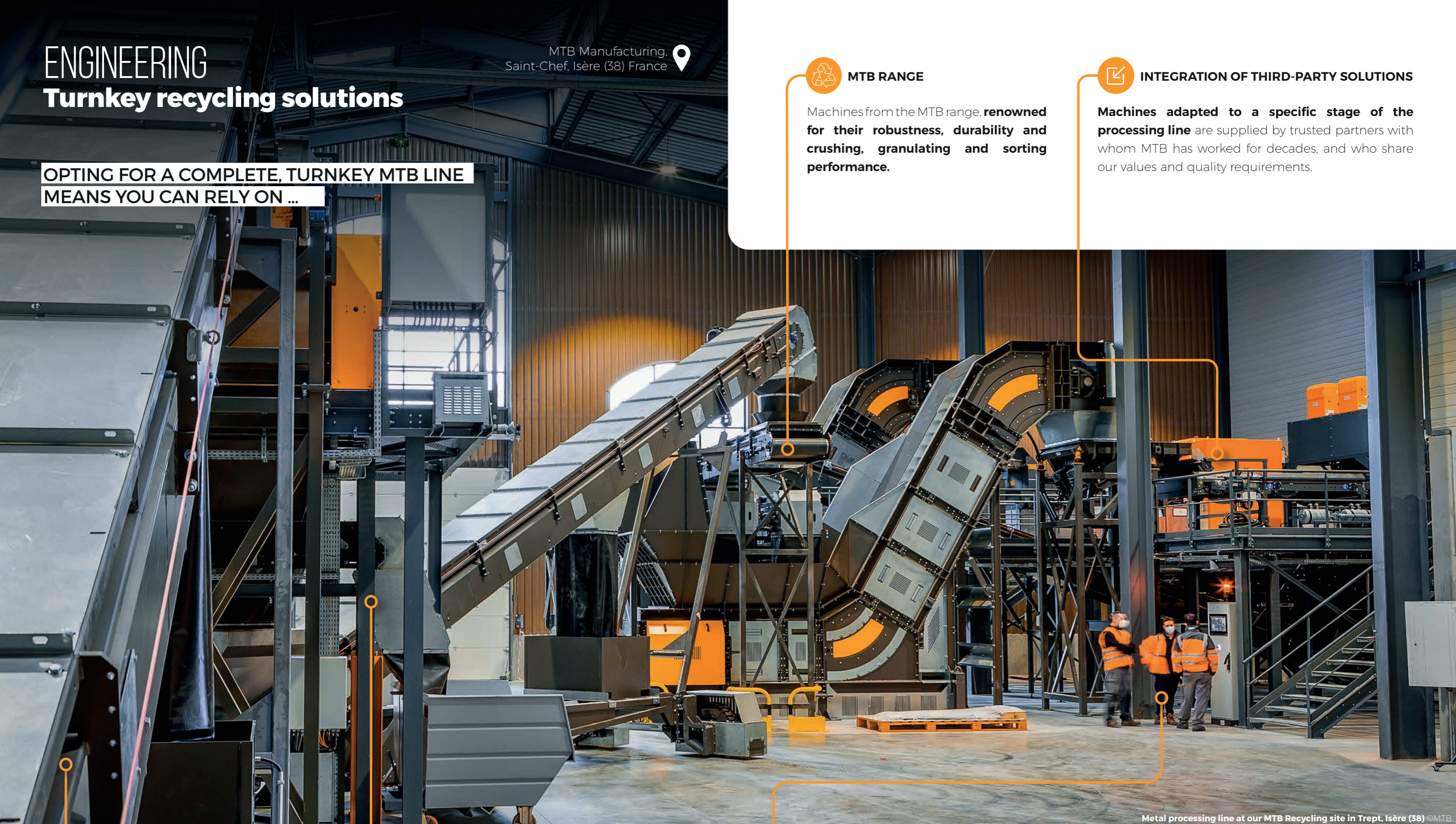
MTB RANGE

Machines from the MTB range, renowned for their **robustness, durability and crushing, granulating and sorting performance.**



INTEGRATION OF THIRD-PARTY SOLUTIONS

Machines adapted to a specific stage of the **processing line** are supplied by trusted partners with whom MTB has worked for decades, and who share our values and quality requirements.



Metal processing line at our MTB Recycling site in Trept, Isère (38) ©MTB



HYPER-ADAPTABILITY

Whether it's a complex and unique line or a standard line, **we deploy all our human and material resources to offer a solution tailored to your needs.**



PRODUCTION ERGONOMICS

A customized, efficient and effective layout designed to optimize product quality and **guarantee operator safety and comfort.**



A SINGLE PROJECT MANAGER

Once the project is signed: **a project manager is assigned to the project.** He ensures the smooth flow of information and remains in **constant contact with internal teams, external service providers and the customer.** He is familiar with all the specifics and potential changes in the request. **He is responsible for the financial management of the entire project, from the design phase through to commissioning of the machines on site.**

Customer installations by MTB Manufacturing

CABLES LINE - USA



WEEE LINE - FRANCE



RDF LINE - FRANCE



TIRES LINE - SERBIA



RECYCLING

Complex waste

MTB Recycling.
Trept, Isère (38) France

MTB Recycling is the first user of the waste treatment solutions developed by MTB Manufacturing. MTB Recycling has a **recycling capacity of 50,000 tons** of industrial waste per year, **on a surface area of 70,000 m²**.

- Over 44 years' experience in processing ferrous and non-ferrous metals.
- 95% recovery of incoming waste.



Purchasing

Services

Sales

7 recycling lines, dedicated to tomorrow's waste treatment.



ZERO WASTE METAL

ZERO WASTE PLASTIC

ZERO WASTE COPPER

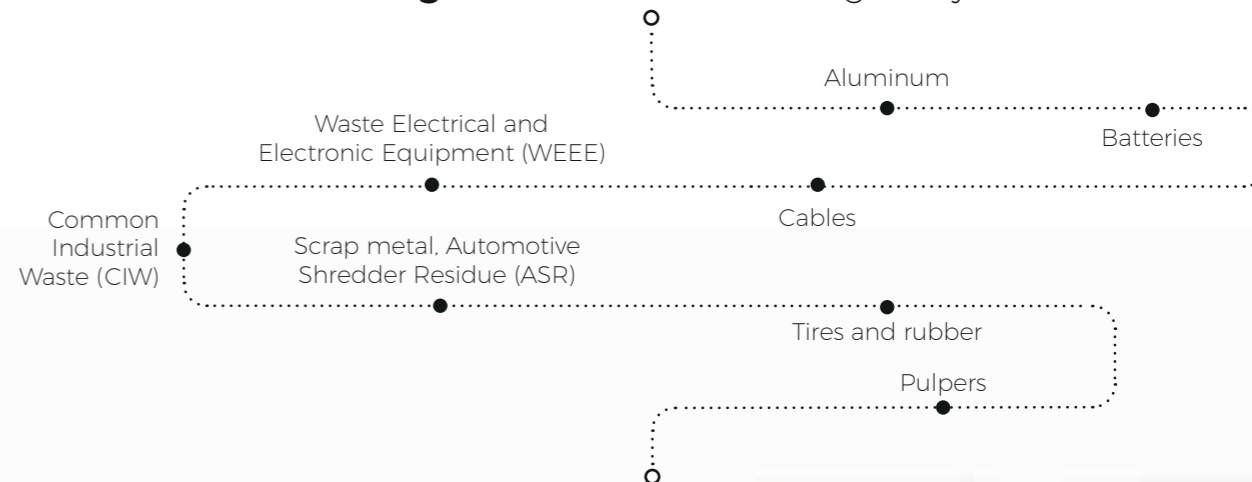
PRODUCTION LIGNE FOR CUSTOMIZED SERVICES

TEST CENTER

ZERO WASTE ALUMINUM

ZERO WASTE BATTERY

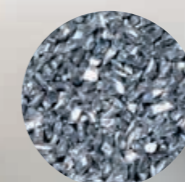
A wide range of resources for a single objective...



Creating high-quality strategic materials with low environmental impact.



Copper



Aluminum



Plastic



Blackmass

COPPER AND ALUMINUM PURITY FROM

98.5% & 99.9%



Copper shot at the end of our ZWC line at MTB Recycling in Trept, Isère (38) ©MTB

CERTIFIED TRACEABILITY AND PREMIUM QUALITY



Our traceability system provides total visibility of the product, from pick-up request to shipment of the final product.



Supply chain management



Sampling



Quality control



Cable trimming



Analysis laboratory



Digital and automated tracking

Our production lines at MTB Recycling

ZERO WASTE ALUMINUM

Aluminum cable recycling line



ZERO WASTE COPPER

Copper cable recycling lines



ZERO WASTE PLASTIC

Plastic recycling line



ZERO WASTE BATTERY

Lithium-ion battery recycling pilot line



OUR SERVICES

Support for eco-innovation

The Eco-Innovation Team helps companies to implement initiatives that support the circular economy. It focuses on:

- **Optimizing resource use**
- **Reducing the environmental impact of goods and services**

Our resources for eco-design:

- **An industrial-scale testing facility equipped with a dedicated fleet of machines.**
- **A scientific approach to providing high-quality support.**

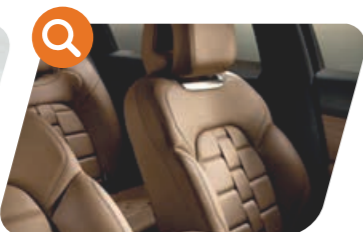


+100 trials/year
3 engineers 2 technicians

Some concrete examples:



Implementation of a **ski recycling program** enabling the reincorporation of materials and improving the recyclability rate from 6% to 77%.



Decarbonization and recycling of automotive cockpits.



Recycling of critical metals found in electric vehicle motors.



Development of a solution for recycling composite materials from **wind turbines**.

Test center

Our recycling facility includes an area dedicated to customer trials. Before finalizing the purchase of one of our systems, **customers have the opportunity to test their own materials on our technologies**, if video resources are not yet available.

This step allows you to:

- Optimize machine processing settings.
- Project yourself into actual use of the system.



Laboratory

A laboratory is also available on our site. It is equipped with high-performance analysis tools that enable:

- **Check the quality of recycled material,**
- **Validate the recipe parameters** to make an informed decision.



Installation - MTB Service

Our team of technicians travel the world **to commission your installations.**

Specialized in maintenance and repair, and able to intervene rapidly, they support you in your day-to-day activities.



Training and coaching

Our Training & Coaching team, made up of process experts, **trains your staff** after machine commissioning to give them the keys to success. The team ensures that **your employees master all the parameters of our equipment, for optimized performance.**



Customer support

A dedicated team that:

- Organizes **predictive maintenance** for your equipment, based on line availability.
- Organizes **breakdowns** and **supplies wear parts** within a short timeframe.
- Provides advice.



MYMTB Plateform

The **connected dashboard** for your MTB equipment, providing comprehensive reporting and monitoring.



Equipment inventory



Documents library



Access to data history



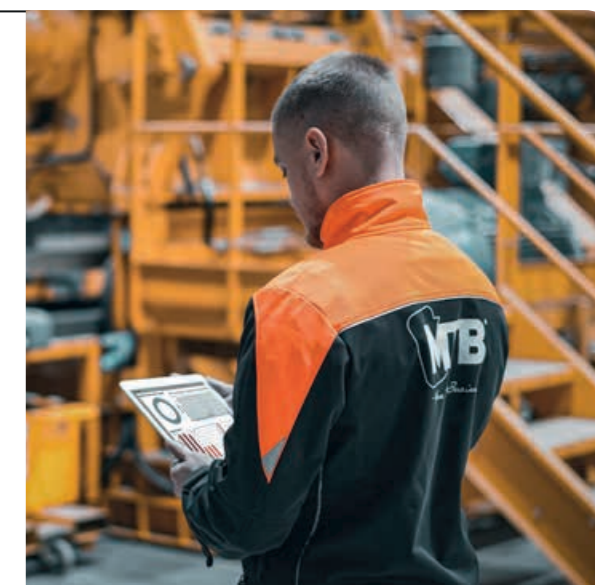
Support area



Notification center



Production overview



THE BENEFITS

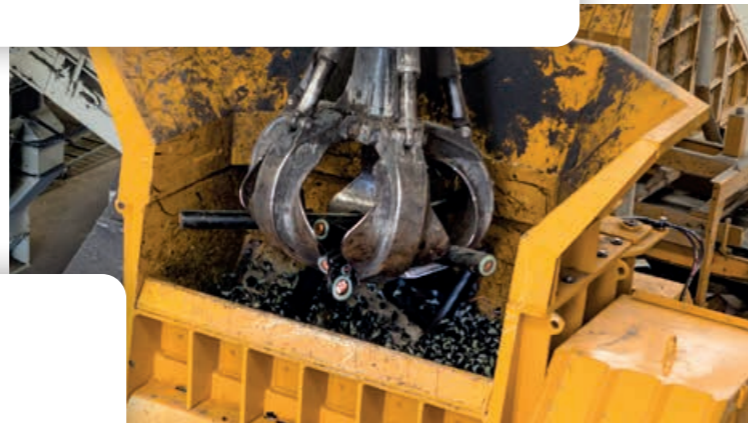
of the equipment used on site and the MTB range

By combining, across our two French sites, the design, assembly, and characterization of our recycling equipment with the operation of our own facility, MTB has built a unique machinery fleet and a range of equipment that stands out thanks to numerous advantages.



High-performance shredding

- Mechanical robustness
- Machine longevity
- Homogeneous preparation for maximum separation



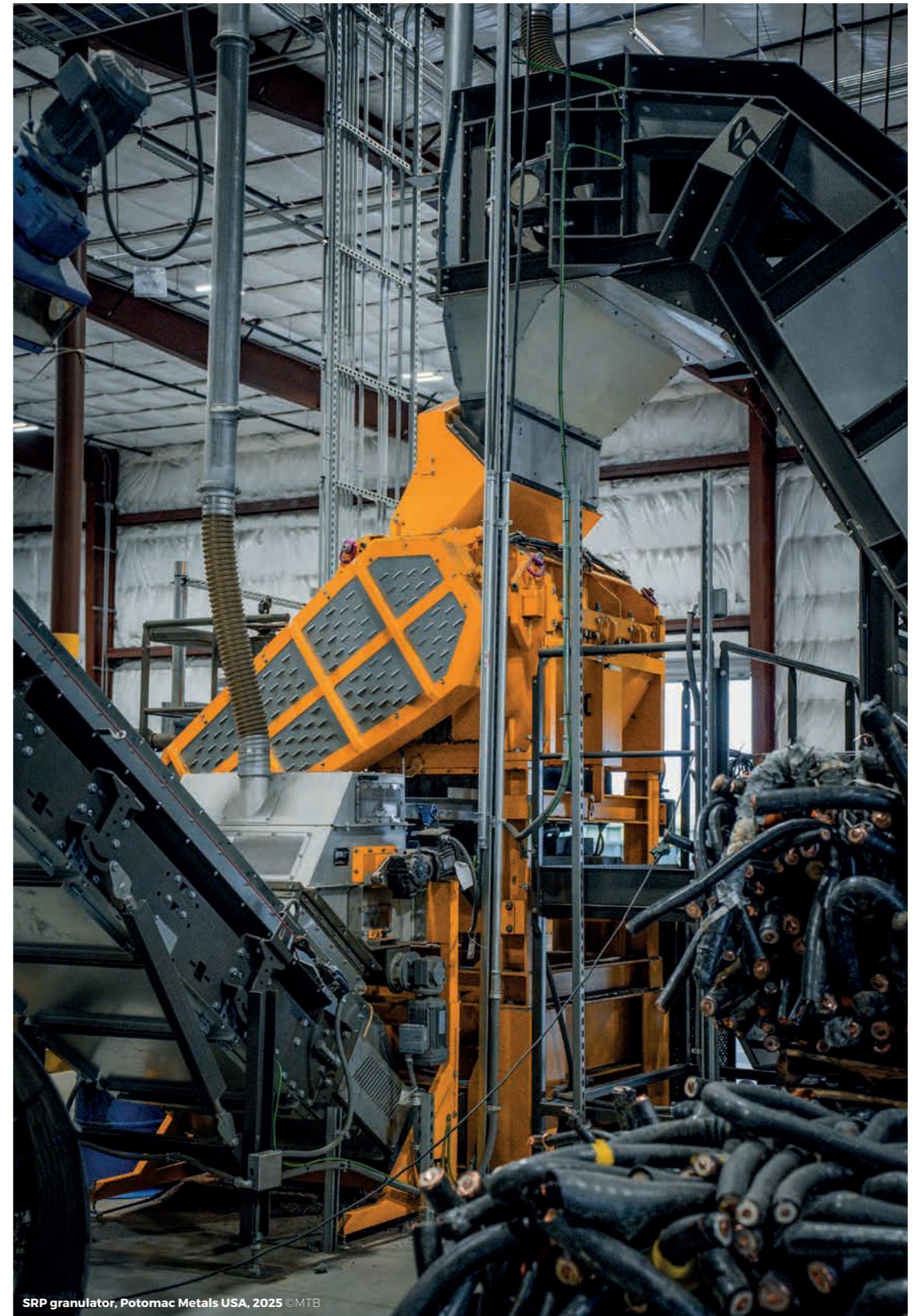
Intelligent automation and total flexibility

- Self-regulating sensor system for realtime optimization
- System adapts to different types of flow
- Line can be customized for each industrial project



Profitability and environmental preservation

- Simplified maintenance: standard parts, reduced costs
- Maximum dust collection for a healthy working environment
- Economical performance and limited environmental impact



SRP granulator, Potomac Metals USA, 2025 ©MTB

AND TOMORROW ?

Matthias



Jérôme



Preserving our resources

BY TARGETING ZERO WASTE



Being an industrial model

THAT CREATES WAOUH EFFECT



Reconnecting with nature

TO PRESERVE LIFE



Mélanie



www.mtb.fr



Address:

MTB Group
Parc d'Activités des Balmes Dauphinoises
3553 route de Chamont
38890 Saint-Chef FRANCE

Mail:

info@mtb.fr

Phone:

+ 33 4 74 92 87 68